

Elcho School District

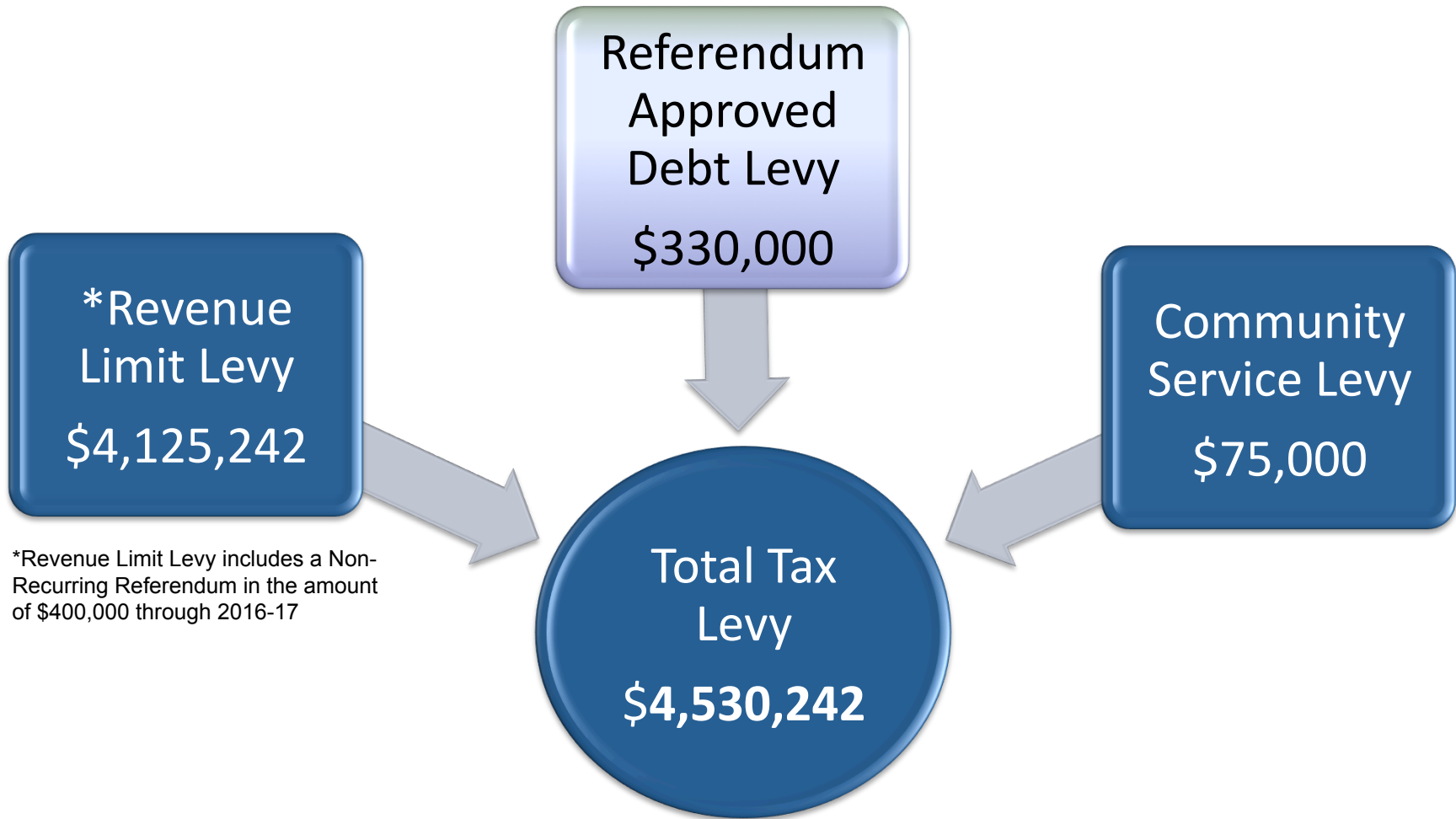
Board of Education
Referendum 101

Lisa Voisin
Managing Director
414-765-3801
lvoisin@rwbaird.com

July 19, 2016
5:30 PM



Total 2015-16 School Tax Levy



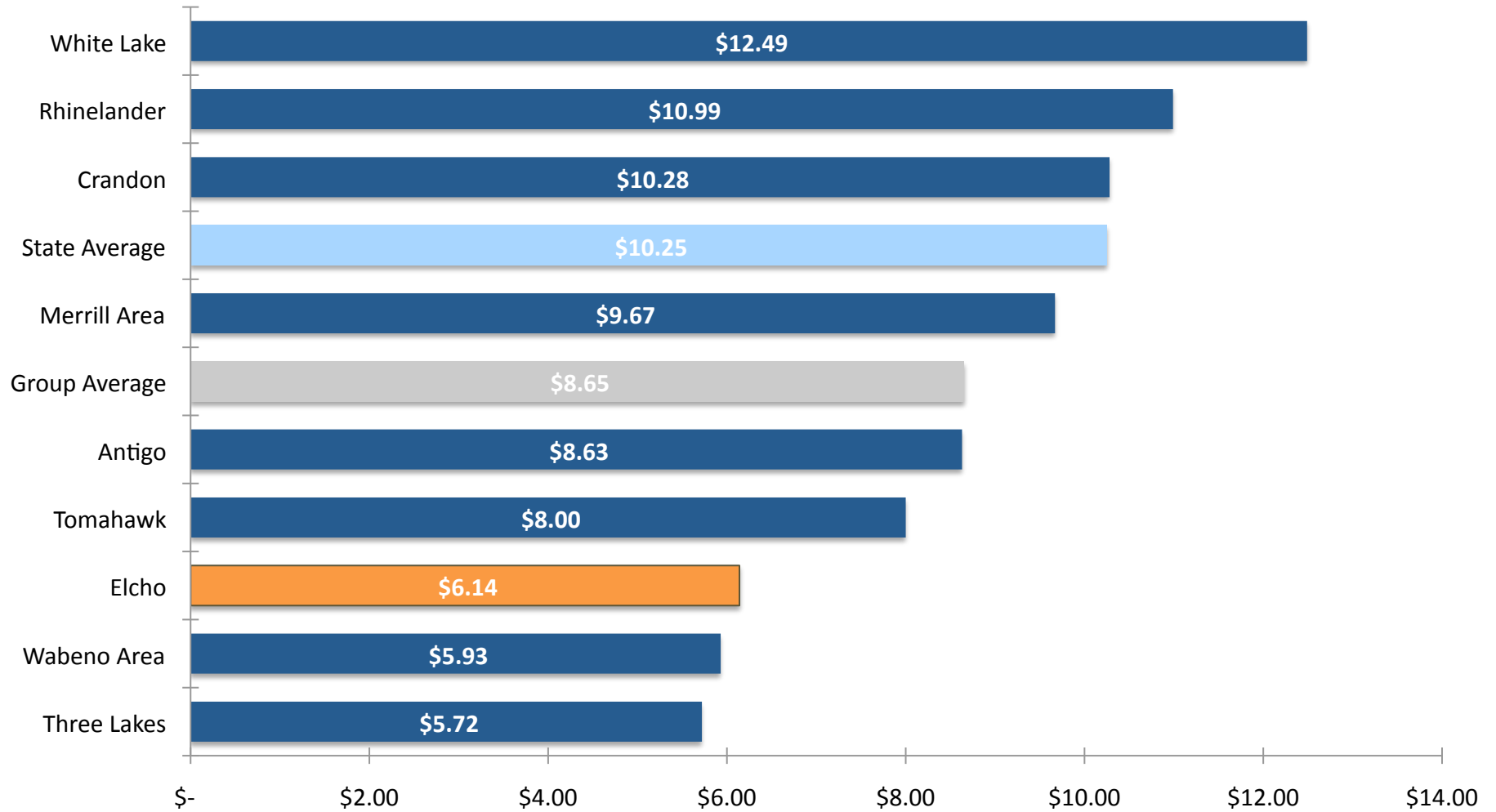
*Revenue Limit Levy includes a Non-Recurring Referendum in the amount of \$400,000 through 2016-17

Understanding “Mill Rate”

- Total Levy/Total Property Value per Thousand = Mill Rate
- 2015-16 Mill Rate:
 - $\$4,530,242 / \$737,340,389 * 1,000$
 - \$6.14 Mill Rate
 - \$614 on \$100,000 Home

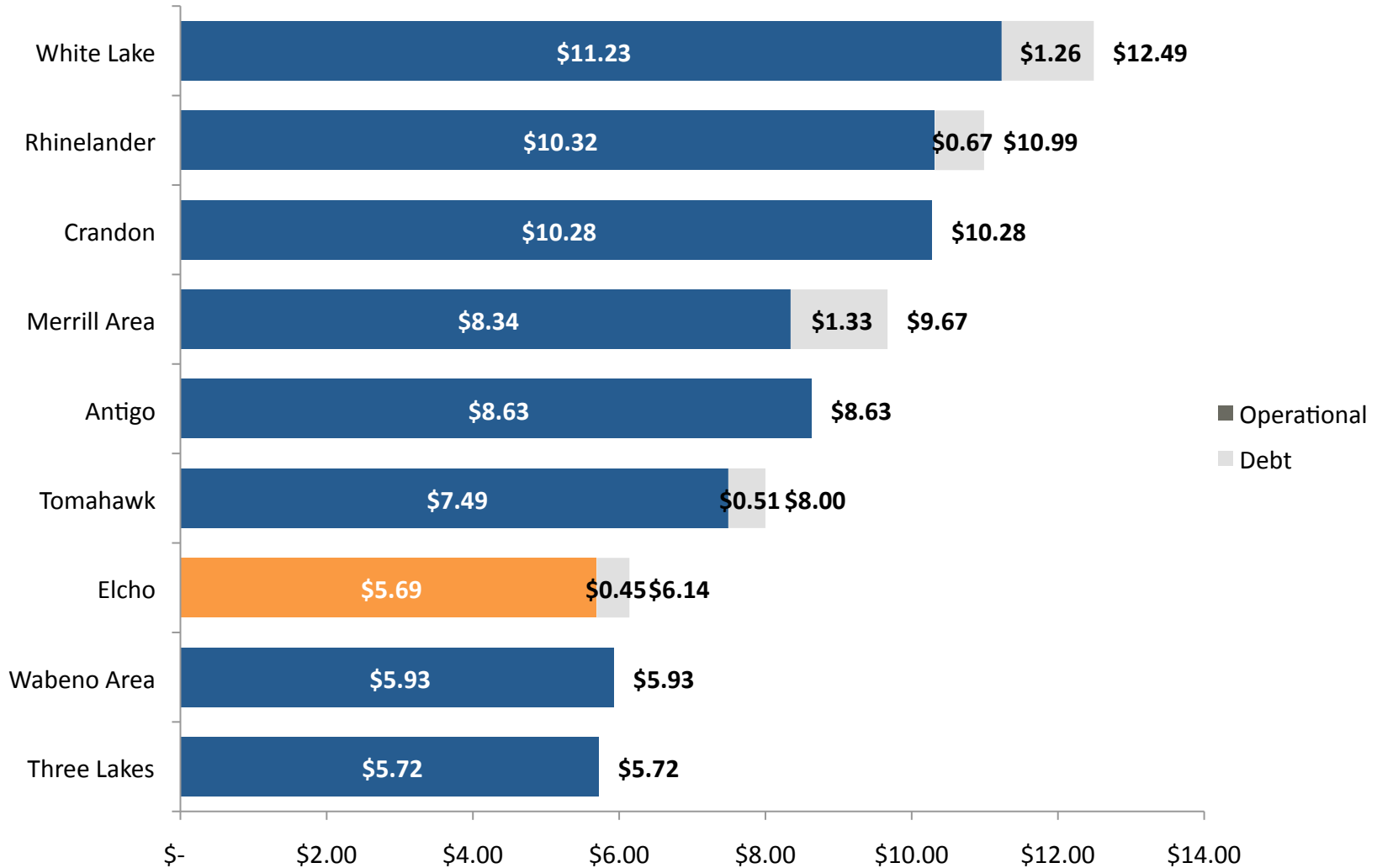


2015-16 Mill Rate Comparison



Source: Department of Public Instruction

2015-16 Mill Rate Comparison

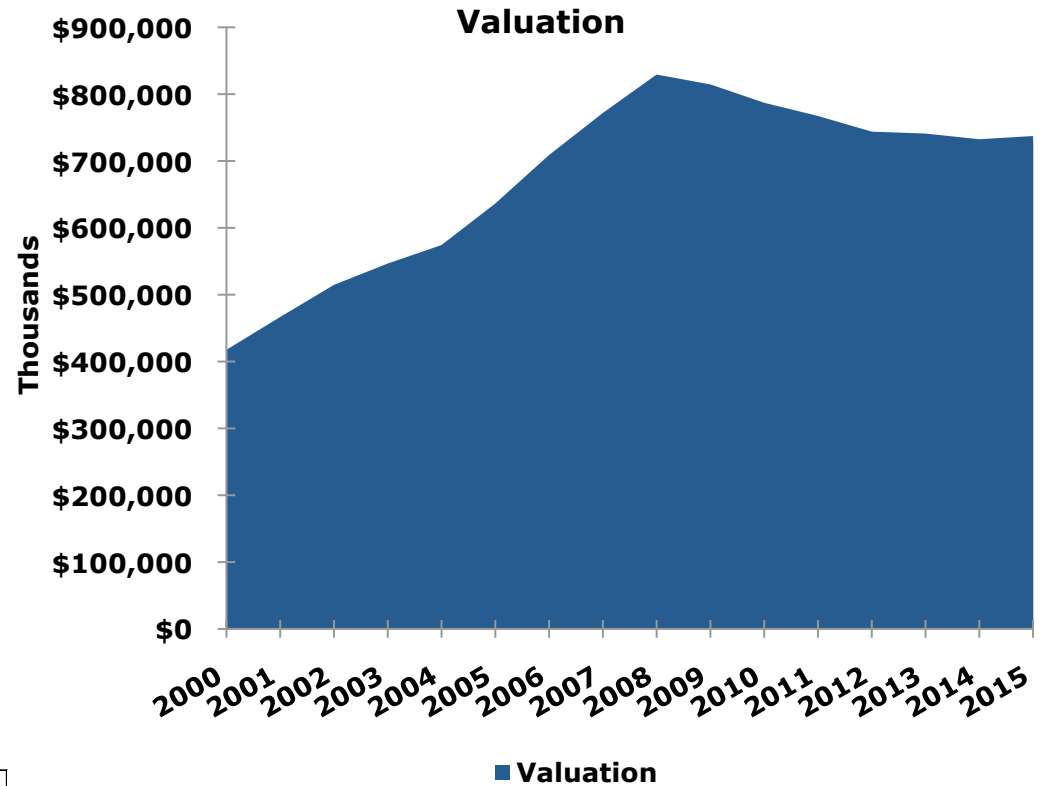


Source: Department of Public Instruction

Equalized Valuation Trend

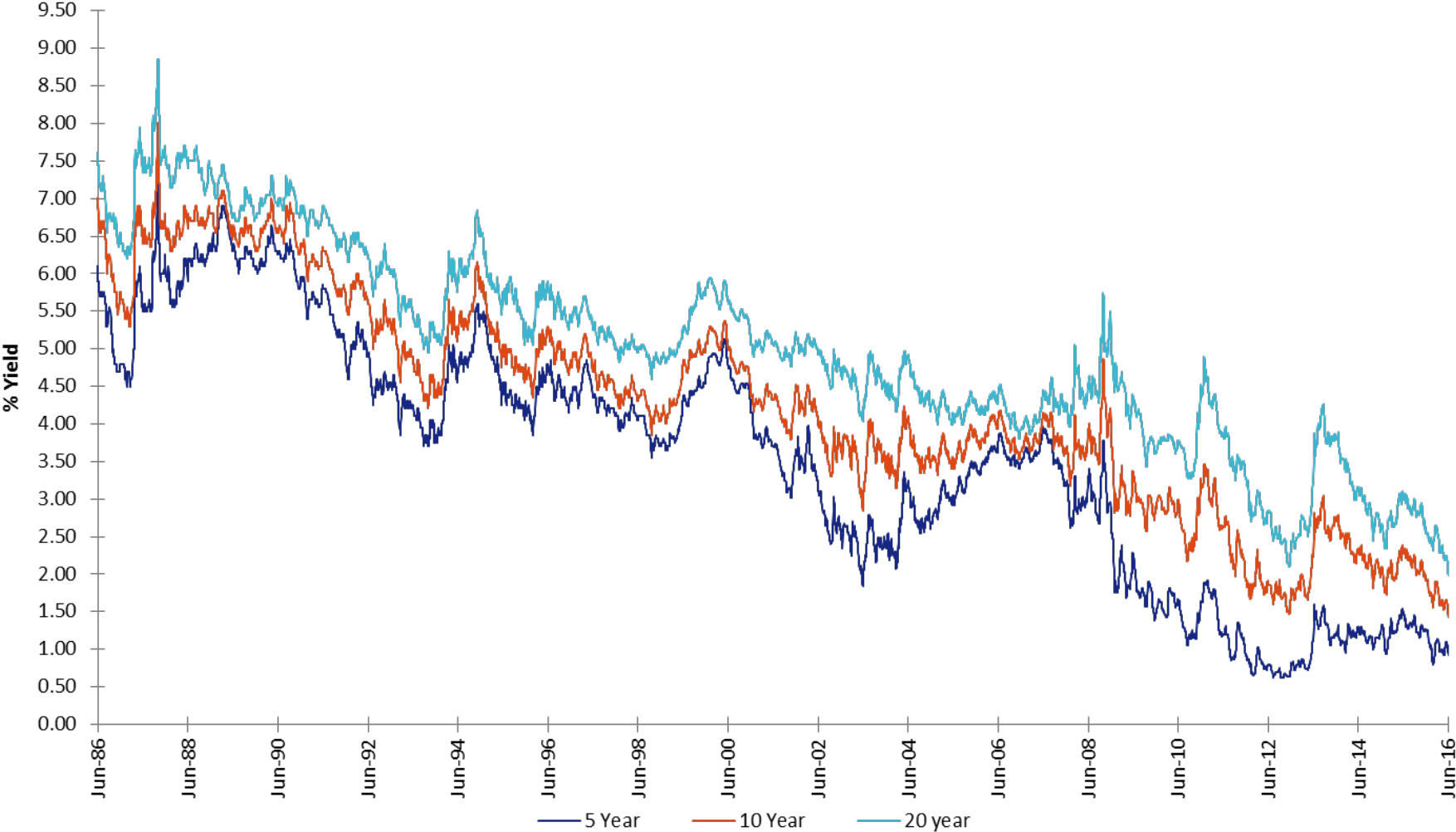


<u>Year</u>	<u>Valuation</u>	<u>% change</u>
2000	\$417,518,676	
2001	\$466,627,663	11.76%
2002	\$514,664,644	10.29%
2003	\$546,588,026	6.20%
2004	\$574,239,050	5.06%
2005	\$636,405,817	10.83%
2006	\$708,927,300	11.40%
2007	\$771,821,545	8.87%
2008	\$829,313,101	7.45%
2009	\$814,546,201	-1.78%
2010	\$787,070,824	-3.37%
2011	\$767,314,174	-2.51%
2012	\$743,889,034	-3.05%
2013	\$741,019,507	-0.39%
2014	\$732,512,271	-1.15%
2015	\$737,340,389	0.66%



Fifteen Year Average Annual Growth Rate..... 3.86%

Historical Interest Rates



SOURCE: Thomson Municipal Market Data of as of June 16, 2016

Estimated Referendum Tax Impacts



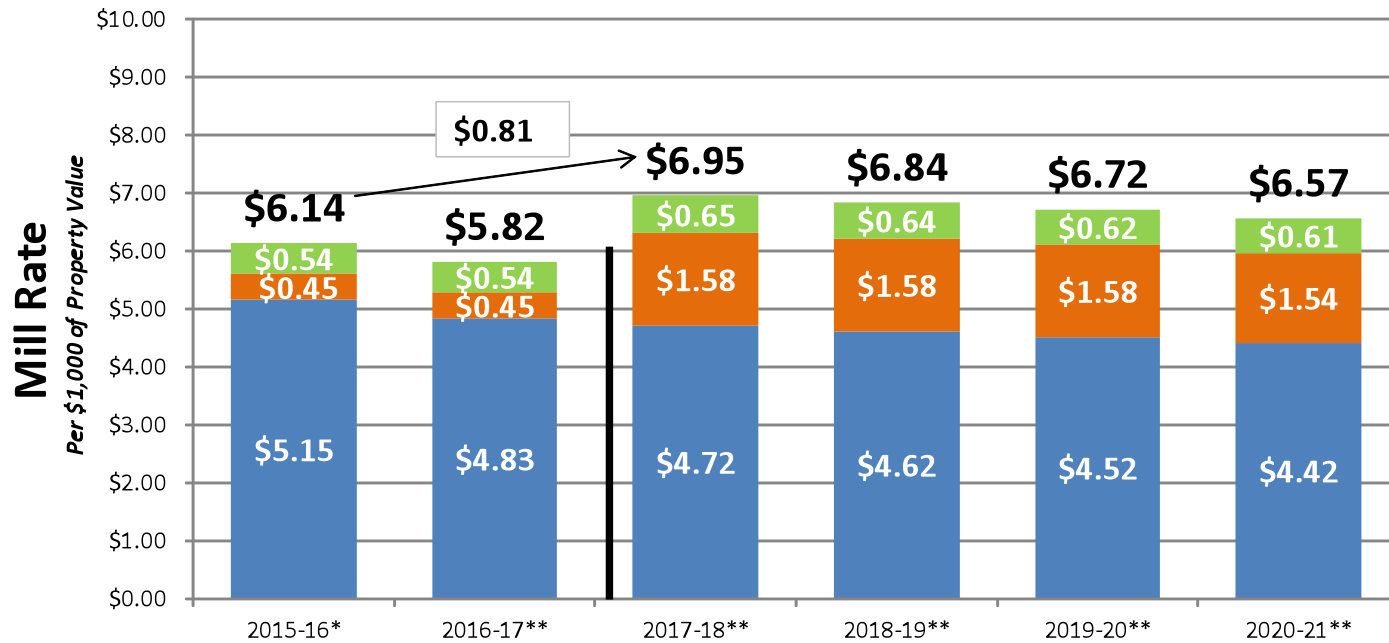
**Question #1
DEBT**

**Question #2
REVENUE CAP**

\$18,000,000

\$500,000

(4 Years)



*Actual Mill Rates

**Estimated Mill Rates